

Results Software Release Notes

May 2019

Overdue Notification Feature Presentation

(Plus, a Sneak Preview of Cool Dashboards!)

The Results Management System™ and Results Software™ | The Power to Improve



Announcing our May 2019 Release

We are excited to share with you our latest major upgrade to Results Software. Our latest release has two new enhancements. We want to thank all of you who have provided us with ideas and feedback. These upgrades are a direct result of your inputs!

The first enhancement is the ability to receive an email notification when measures are coming due. Administrators can also set up a “cc” on all outgoing notifications. The second enhancement is a significant upgrade to the Presentation Engine resulting from your feedback.

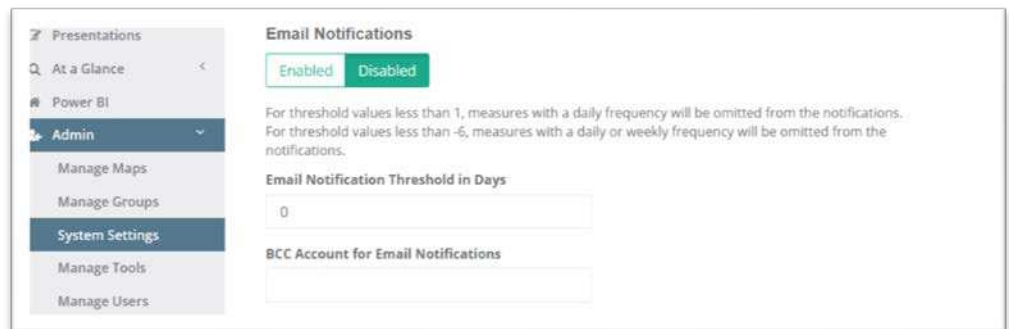
Both features were designed with the goal of significantly reducing the time and headache involved in managing your measures and your putting together the documentation for measure review meetings.

Plus, we want to share with you our new Interactive Dashboard capabilities. We’ve included a few screen shots in the appendix to stimulate your thoughts on how dashboards can be useful to your organizations. Contact me for a demo and design discussion!

Email Notification

Note: To use this feature, your tenant must be linked to your email functionality.

1. Under **system settings**, the administrator enables email notifications.
2. Administrator sets how many days in advance they want the notification to be sent out to the measure owner.
3. Note: Notification can be set to be in advance of the due date. For example, -3 would trigger the notification to be sent three days before the measure is due.
4. Note: There are business rules for the following measure conditions:
“For threshold values less than 1, measures with a daily frequency will be omitted from the notifications. For threshold values less than -6, measures with a daily or weekly frequency will be omitted from the notifications.”
5. Owner receives notification that they have a measure either coming due or overdue for a data point.
6. Administrator can also set up an additional email to be copied on the notification.



May 2019 Release

7. Owner will receive notification twice a week until the measure is current with required data point. Once they hit the threshold again, they will receive notification for the next data point due.

Sample Email Notification:

Hello Susan,

The following measure(s) require your attention:

- [Measure 13 Quarterly 1](#) -- due in 6 day(s)
- [Measure 11 Semi-Monthly](#) -- due in 2 day(s)
- [Measure 10 Bi-Weekly](#) -- due in 1 day(s)
- [Measure 15 Yearly](#) -- 2 days overdue

This is an automated email, do not reply to it. If you have any questions, please contact your Results system administrator.

Thank you.

Presentation Engine

Upgrades: (See appendix for detailed screen shots)

1. Three new and versatile layouts: Text only, Data Table/Text, and Image/Text join the Chart/Text layout.
2. Easy to use layout selector
3. Ability to easily upload an image to a slide
4. Ability to create a presentation header and footer and insert an image
5. Page numbers added to the footer section
6. Improved chart sizing and added data field highlighted next to chart
7. Ability to set borders around text and image boxes
8. Ability to clone off an established presentation format
9. Improved text formatting

Original functionality (for your reference)

1. Provides the ability to collaborate across multiple measure owners at the same time. Multiple users can be inputting into the presentation simultaneously.
2. Staff has editing rights to measure notes based on their RESULTS permission and ownership assignments
3. Presentations can have as many measures as necessary and the measures can come from throughout the organization (any map).
4. Create measure presentations for everything from daily huddles to quarterly business reviews.
5. Presentation Title and Table of Contents are automatically generated and updated.

May 2019 Release

6. Presentations are in a standard “landscape slide” format that is familiar to users and audiences.
7. Large text fields available to document and discuss the performance of a measure and any appropriate next steps to apply corrective action.
8. Each slide can be customized with a flexible text editor.
9. Measures are easily selected for each slide.
10. Presentations can be locked down (e.g., “frozen in time”) to maintain proper history and archiving.
11. Presentations can be named and saved for future reference. Historical narrative on past reviews easily retrievable.
12. Presentations can be navigated with simple directional controls.
13. There is no limit to the number of presentations that can be created.
14. Presentation is saved within RESULTS but can be downloaded as PDF for saving on an external drive or to be printed.

Our Ask of You

Our ask of you remains the same as in the past. Please start using Presentation Engine and experiment with the power of preparing for your meetings within Results Software. We will continue to add layouts and additional enhancements and look forward to your feedback so we can ensure we are meeting your needs.

Please reach out to Chris Barker (cbarker@massingenuity.com), Results Software Product Manager to schedule a private training session.

Appendix

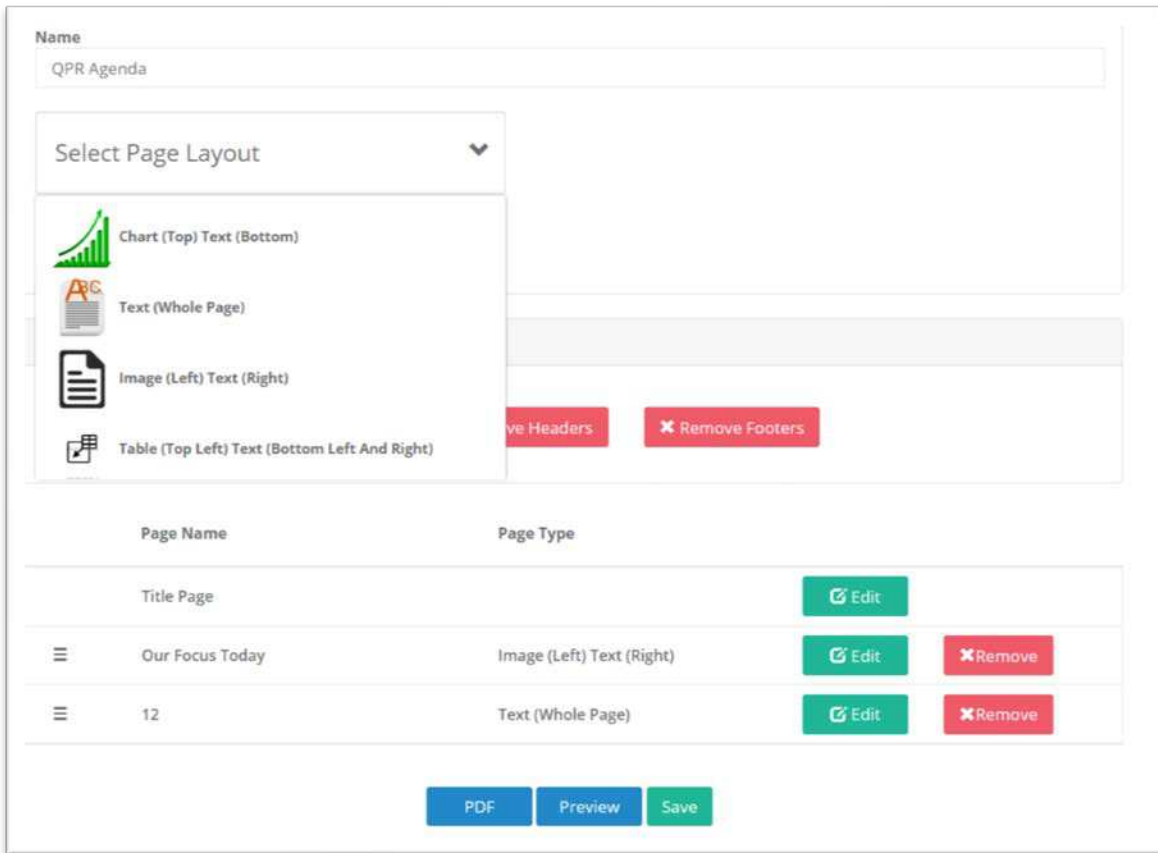


Figure 1: Easy to use page layout control. Four layouts to pick from.

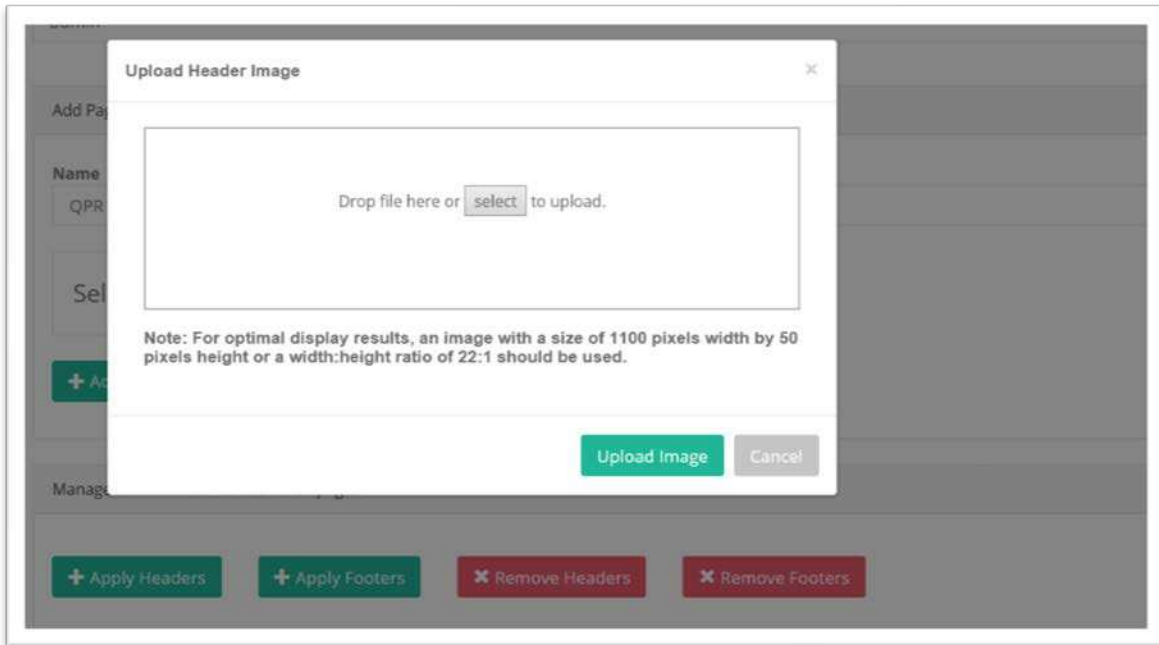


Figure 2: Ability to add a footer, header or both. Click and simply drag image to upload to presentation.

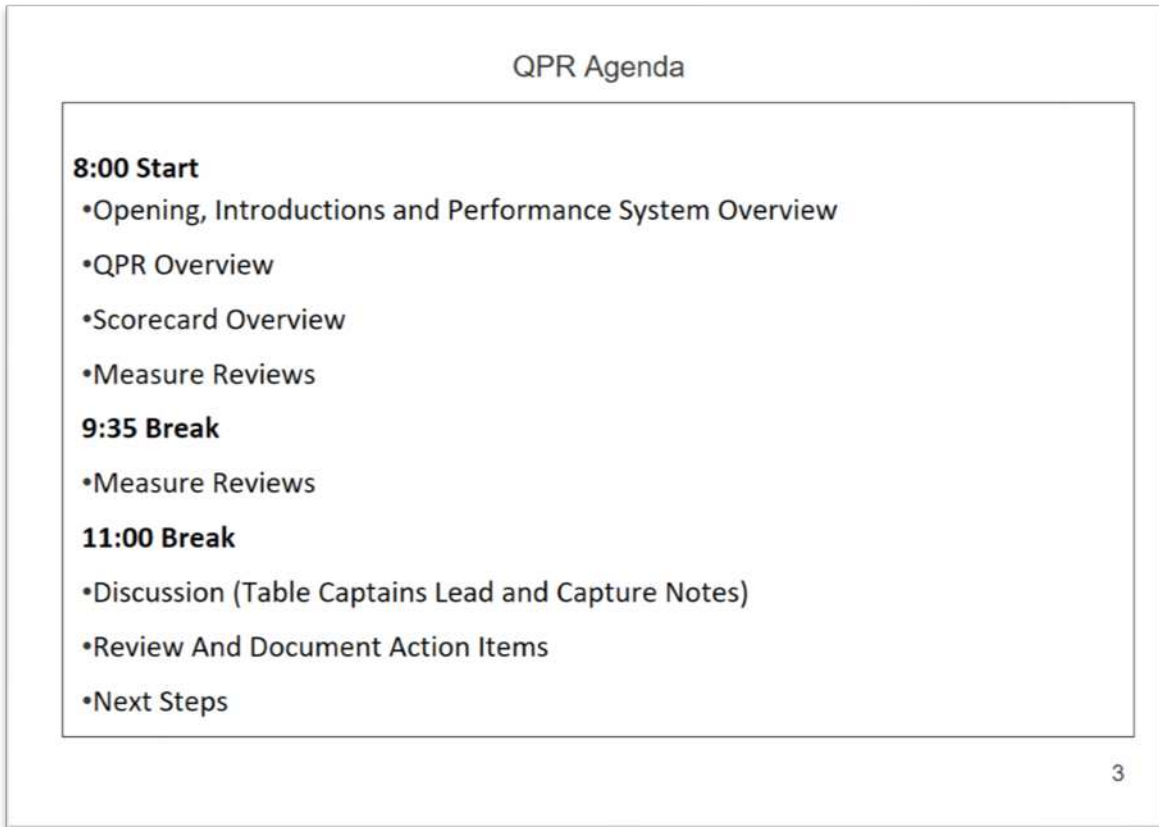


Figure 3: Text only layout

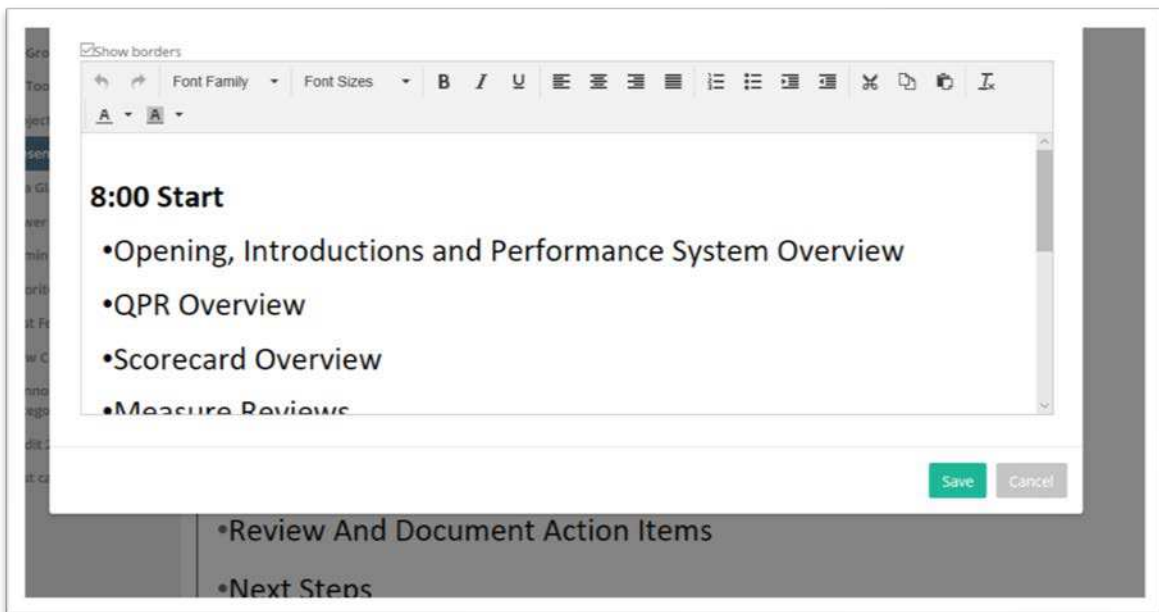


Figure 4: Rich text editor

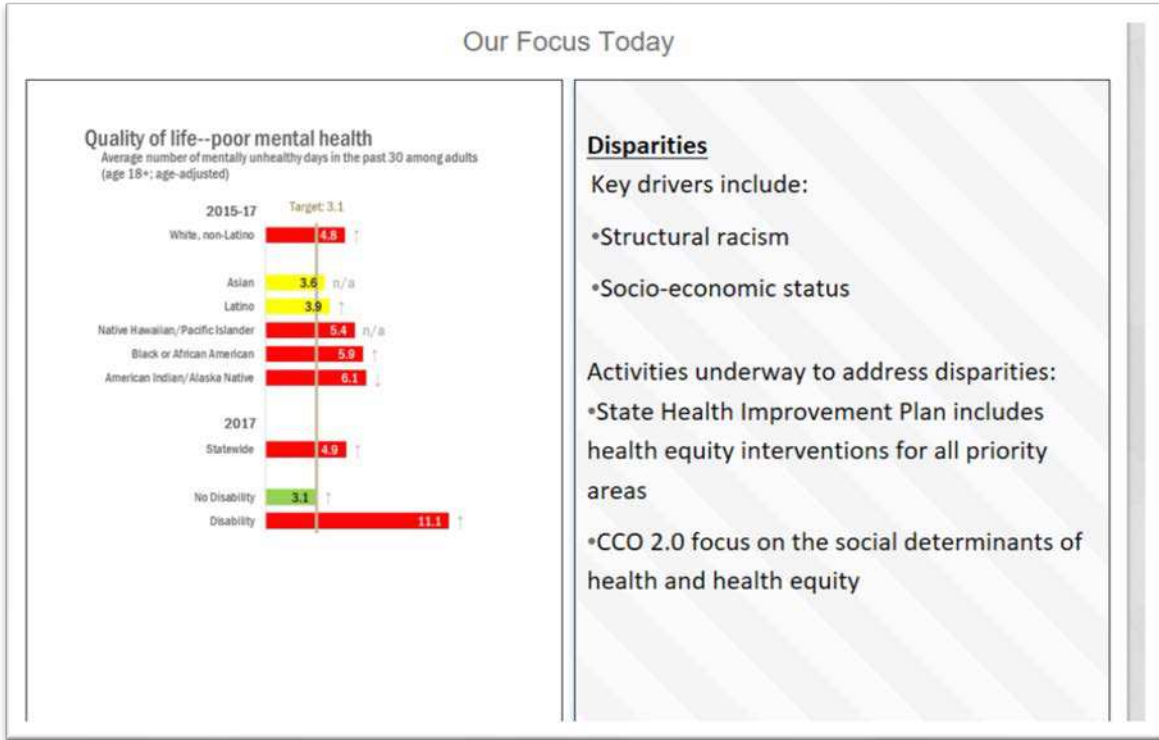


Figure 5: Images including other charts can be uploaded into the presentation

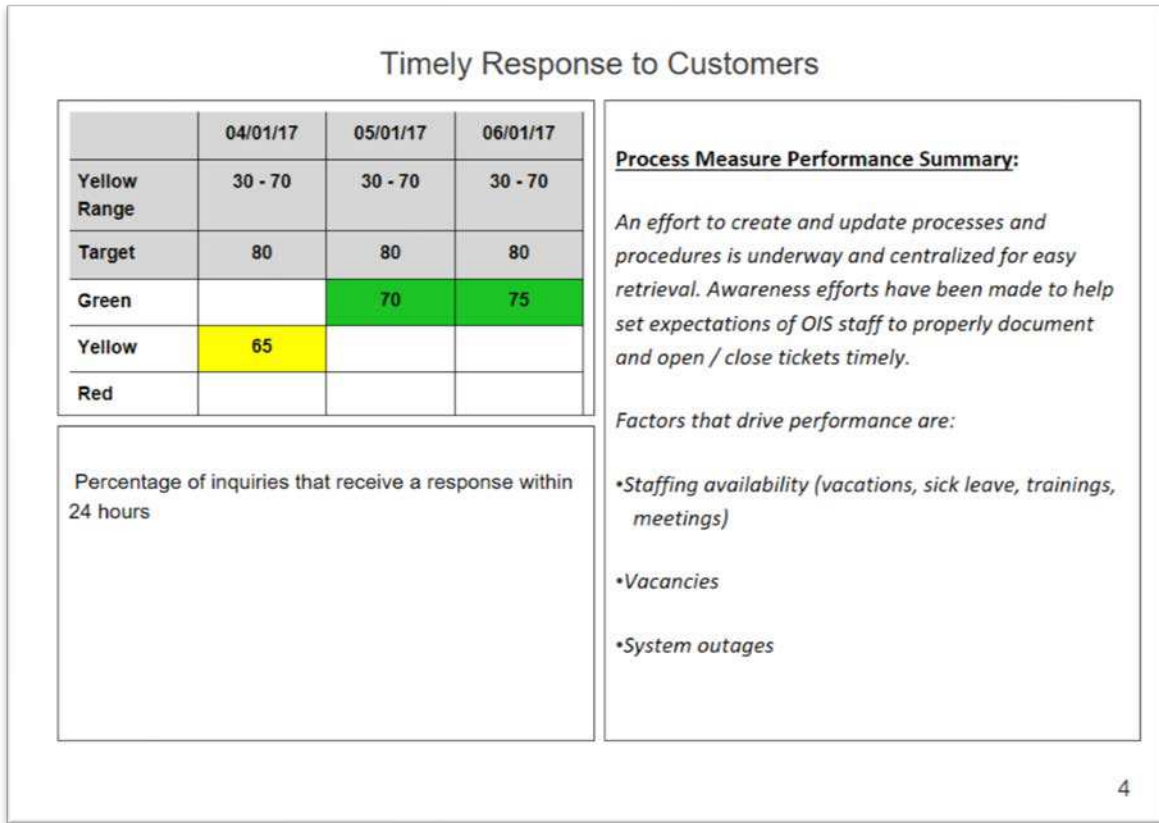


Figure 6: Ability to use a table to report data. Table generated directly from RESULTS.

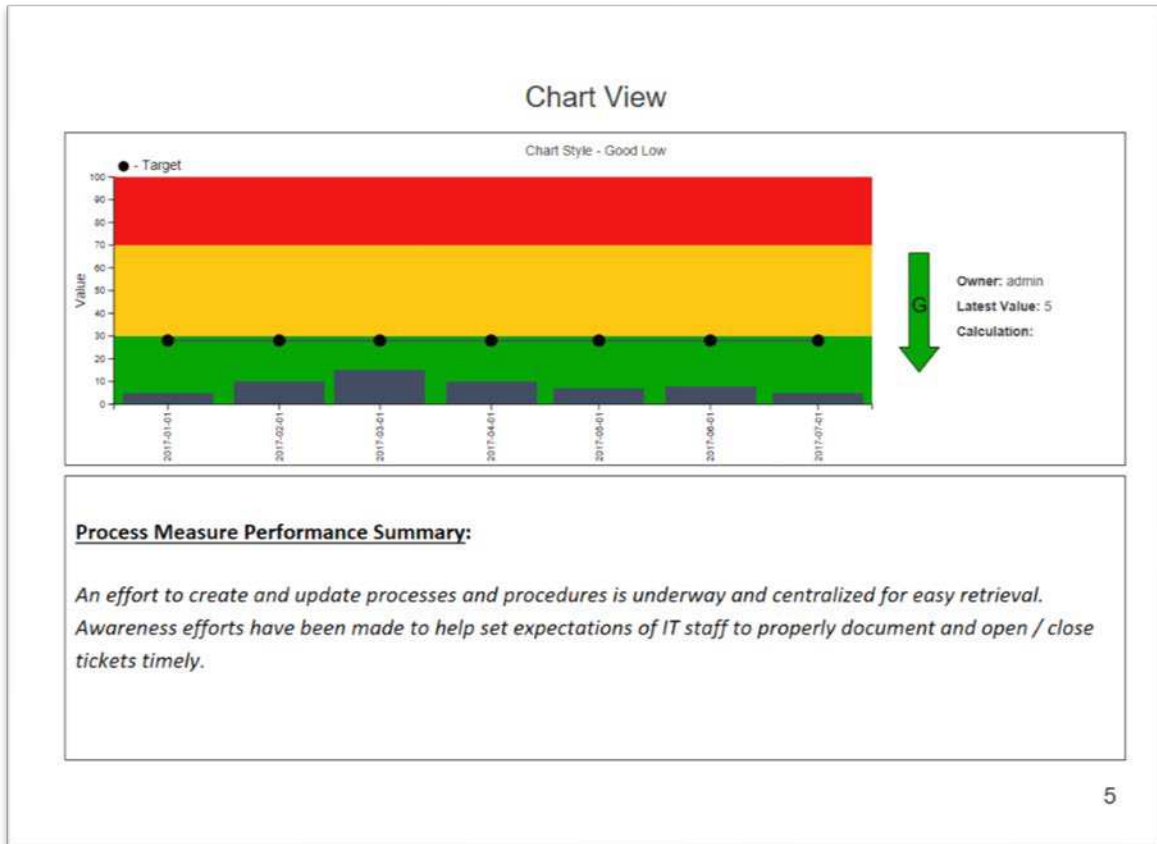


Figure 7: Chart Layout. Chart is produced from RESULTS with your preferred date range. Fields to right of chart are also pulled from RESULTS.

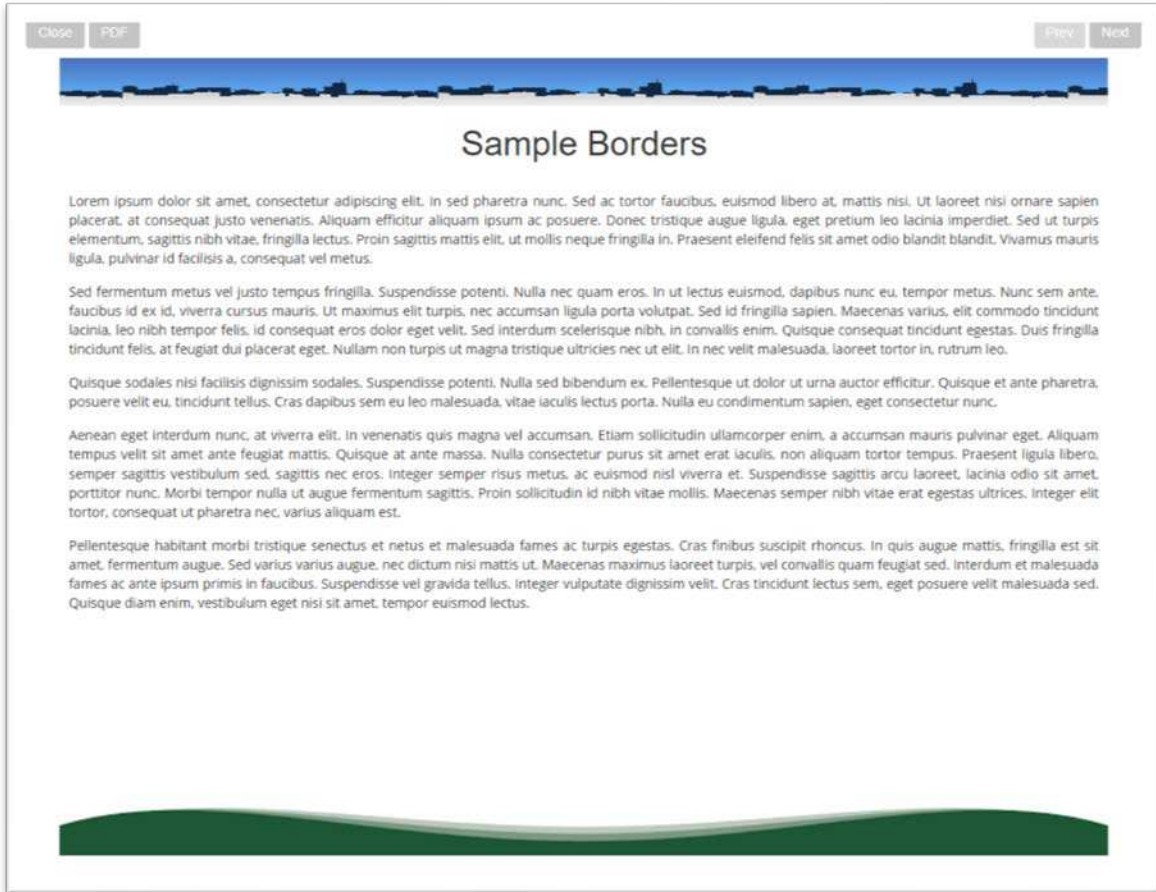


Figure 8: Sample Header and Footer View.

Dashboard – Visualization

Mass Ingenuity now has Power BI resources available to help you design and develop additional dashboard views related to your measures. You can run analytics off your measures as well as show your measures using different chart types. Below are a few screenshots to demonstrate the options through Microsoft Power BI.



